

FIND OUT MORE

on the risks of road accidents in the professional and non-professional transport sectors, in Italian and other languages

Scan the QR code



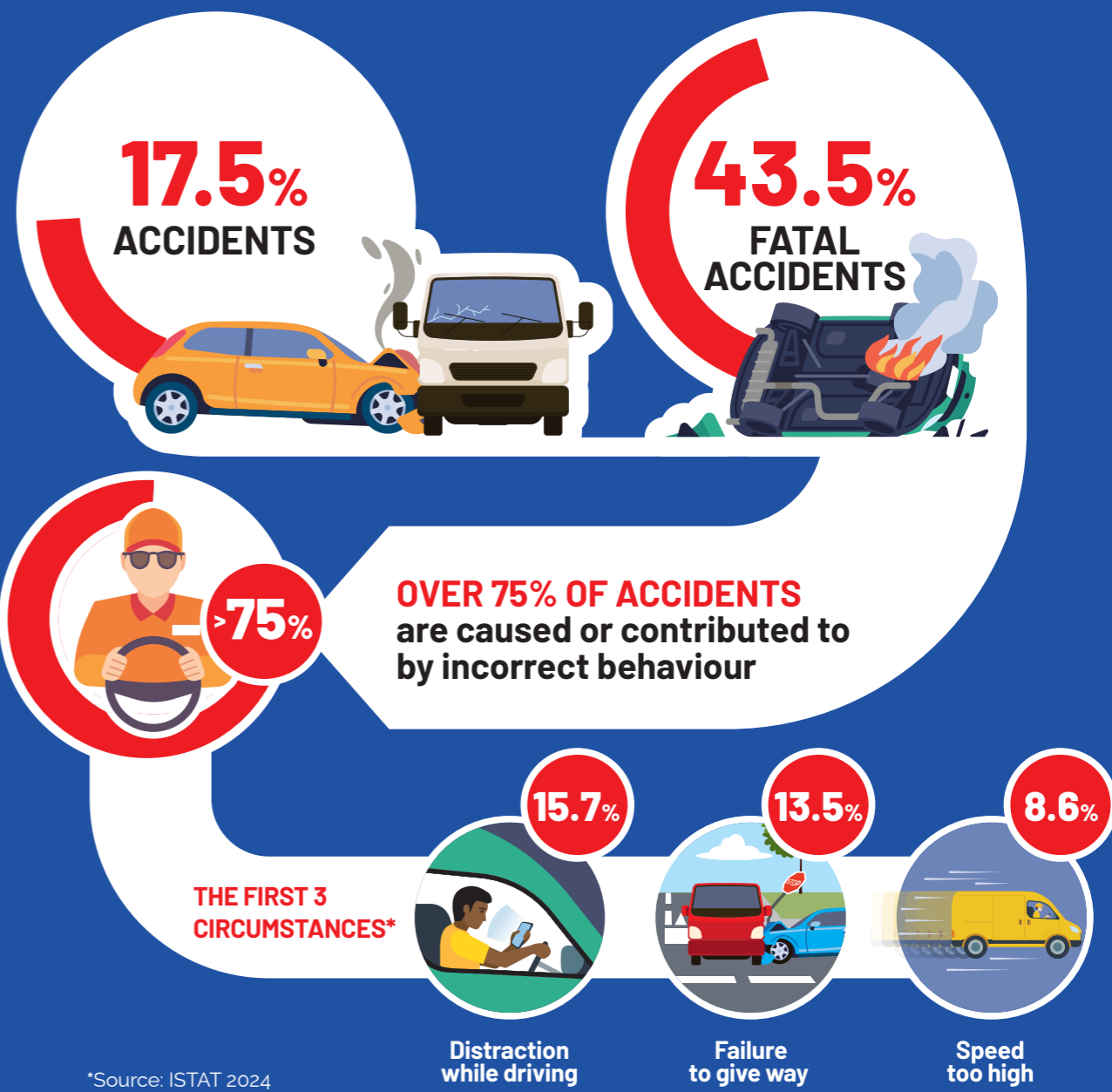
and read the leaflet in other languages



Multilingual material
Texts edited by AUSL Romagna

LET'S WORK TOGETHER TO REDUCE ROAD ACCIDENTS at work

Of the total number of accidents during working hours, road accidents account for:



*Source: ISTAT 2024

The road is not a workplace, but it is still a place where people work.

Implementing a few simple preventive measures by workers and employers, based on an assessment of "road risk", can be useful in preventing road accidents and avoiding serious consequences.



To reduce road accidents, action can be taken through:

1

INDIVIDUAL KNOWLEDGE AND AWARENESS

Knowing how to identify one's own mental and physical abilities in order to drive in optimal conditions (adequate **rest**, avoiding **alcohol and drugs**, paying attention to any effects on driving ability when **taking medication**, etc.).



2

KNOWLEDGE OF THE RULES

Be aware of the rules laid down in the **Highway Code** and the rules of conduct dictated by **common sense**.



3

AWARENESS OF CRITICAL ISSUES

Before setting off, **check the environmental and road conditions**, and the **suitability of the vehicle** (equipment, maintenance, knowledge of how the vehicle reacts), so that you can plan your journey time and route.



4

KNOWLEDGE OF THE VEHICLE

Be familiar with active and passive **safety systems** and know how to use them to best effect; check that the necessary **maintenance** has been carried out.



WHAT YOU CAN/MUST DO AS A WORKER



Do not drive if you are tired (respect driving and rest times)



Do not consume drugs/ alcohol before and/or while driving



Always fasten your **seatbelt**



Do not use mobile phones, tablets or PDAs while driving



You can use your mobile phone if it is connected to the car's Bluetooth via voice commands, but remember to synchronise it before you start driving



Observe **speed limits** on the road and in operational areas



Always remember to **secure the load** so that it does not move during the journey



Remember to **wear high-visibility clothing** every time you get off the vehicle



Always **focus** your attention **solely on the road**



Notify your employer of any **malfunctions**.

WHAT YOUR EMPLOYER CAN/MUST DO



Upon recruitment, in the event of the adoption of new vehicles and periodically, it provides you with **training** in a language you understand on driving behaviour and procedures



It provides you with **ways to report faults, malfunctions**, and any problems encountered while driving



Establishes procedures for **checking the good condition of vehicles**



Provides you with **suitable resources** (maintenance, servicing, equipment/supplies)



In certain cases, it refers you to the **company doctor for a check-up**



Provides you with **personal protective equipment**



Organise shifts and routes in order to **optimise driving times**, ensuring compliance with regulations on driving times and rest periods



Equip vehicles with communication devices that comply with current regulations, i.e. hands-free devices that can be activated without taking your hands off the wheel or your eyes off the road