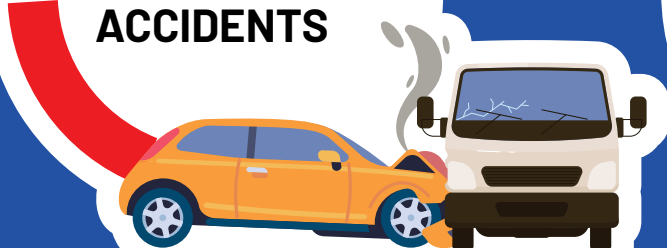


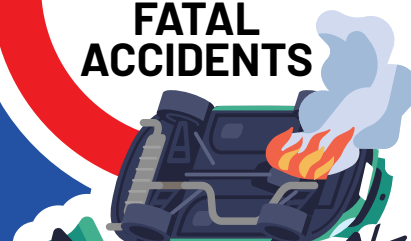
# LET'S WORK TOGETHER TO REDUCE ROAD ACCIDENTS at work

**Of the total number of accidents during working hours, road accidents account for:**

**17.5%**  
ACCIDENTS



**43.5%**  
FATAL  
ACCIDENTS



**>75%**

**OVER 75% OF ACCIDENTS**  
are caused or contributed to  
by incorrect behaviour

**THE FIRST 3  
CIRCUMSTANCES\***

**15.7%**



**Distraction  
while driving**

**13.5%**



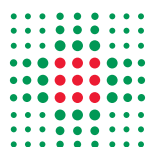
**Failure  
to give way**

**8.6%**



**Speed  
too high**

\*Source: ISTAT 2024



# The road is not a workplace, but it is still a place where people work.

Implementing a few simple preventive measures by workers and employers, based on an assessment of "road risk", can be useful in preventing road accidents and avoiding serious consequences.



**To reduce road accidents, action can be taken through:**

1

## INDIVIDUAL KNOWLEDGE AND AWARENESS

Knowing how to identify one's own mental and physical abilities in order to drive in optimal conditions (adequate **rest**, avoiding **alcohol and drugs**, paying attention to any effects on driving ability when **taking medication**, etc.).



2

## KNOWLEDGE OF THE RULES

Be aware of the rules laid down in the **Highway Code** and the rules of conduct dictated by **common sense**.



3

## AWARENESS OF CRITICAL ISSUES

Before setting off, **check the environmental and road conditions**, and the **suitability of the vehicle** (equipment, maintenance, knowledge of how the vehicle reacts), so that you can plan your journey time and route.



4

## KNOWLEDGE OF THE VEHICLE

Be familiar with active and passive **safety systems** and know how to use them to best effect; check that the necessary **maintenance** has been carried out.



# WHAT YOU CAN/MUST DO AS A WORKER



Do not drive if you are **tired** (respect driving and rest times)



Do not consume **drugs/ alcohol** before and/or while driving



Always fasten your **seatbelt**



Do not use **mobile phones, tablets or PDAs** while driving



You can use your mobile phone if it is connected to the car's **Bluetooth via voice commands**, but remember to synchronise it before you start driving



Observe **speed limits** on the road and in operational areas



Always remember to **secure the load** so that it does not move during the journey



Remember to **wear high-visibility clothing** every time you get off the vehicle



Always **focus** your attention **solely on the road**



**Notify** your employer of any **malfunctions**.

# WHAT YOUR EMPLOYER CAN/MUST DO



Upon recruitment, in the event of the adoption of new vehicles and periodically, it provides you with **training** in a language you understand on driving behaviour and procedures



It provides you with **ways to report faults, malfunctions**, and any problems encountered while driving



Establishes procedures for **checking the good condition of vehicles**



Provides you with **suitable resources** (maintenance, servicing, equipment/supplies)



In certain cases, it refers you to the **company doctor for a check-up**



Provides you with **personal protective equipment**



Organise shifts and routes in order to **optimise driving times**, ensuring compliance with regulations on driving times and rest periods



**Equip vehicles with communication devices that comply with current regulations**, i.e. hands-free devices that can be activated without taking your hands off the wheel or your eyes off the road

# FIND OUT MORE

on the risks of road accidents in the professional and non-professional transport sectors, in Italian and other languages

**Scan the  
QR code**



**and read the leaflet  
in other languages**



**Multilingual material**  
Texts edited by AUSL Romagna

