

Malpighi's portrait. Engraving from a painting of Carlo Cignani (1628-1724).



Il significato clinico patologico dei CDIS & LIN

Maria P. Foschini & V. Eusebi

Department of Oncology, Section of Pathology, University of Bologna, at Ospedale Bellaria Bologna (Italy)

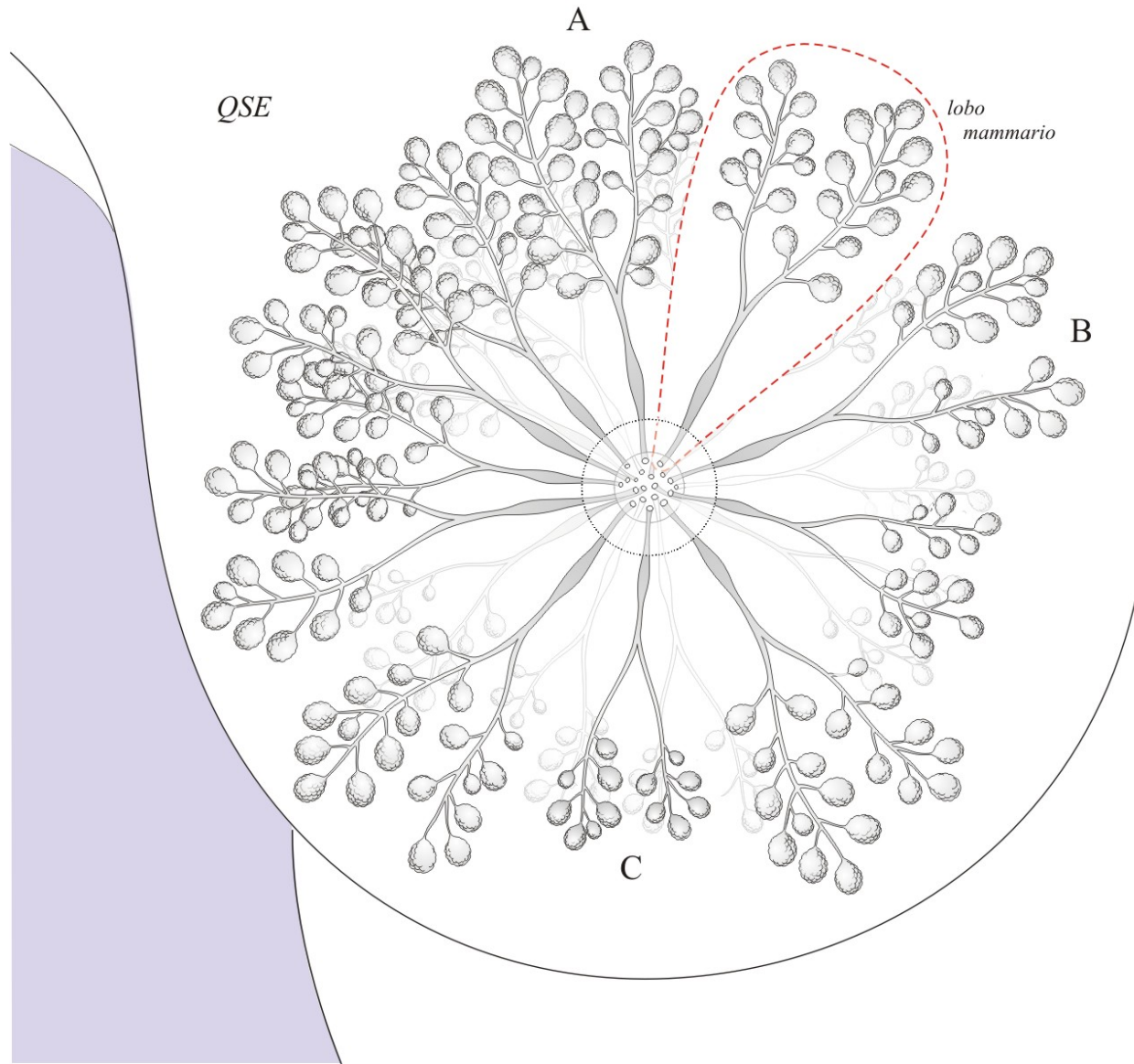
**Mai KT, Yazdi HM, Bums
BF, Perkins DG**

**PATTERN OF DISTRIBUTION OF
INTRADUCTAL AND INTRADUCTAL AND
INFILTRATING DUCTAL CARCINOMA: A
THREE-DIMENSIONAL STUDY USING
SERIAL CORONAL GIANT SECTIONS OF
THE BREAST.**

Hum. Pathol. 31: 464-474, 2000

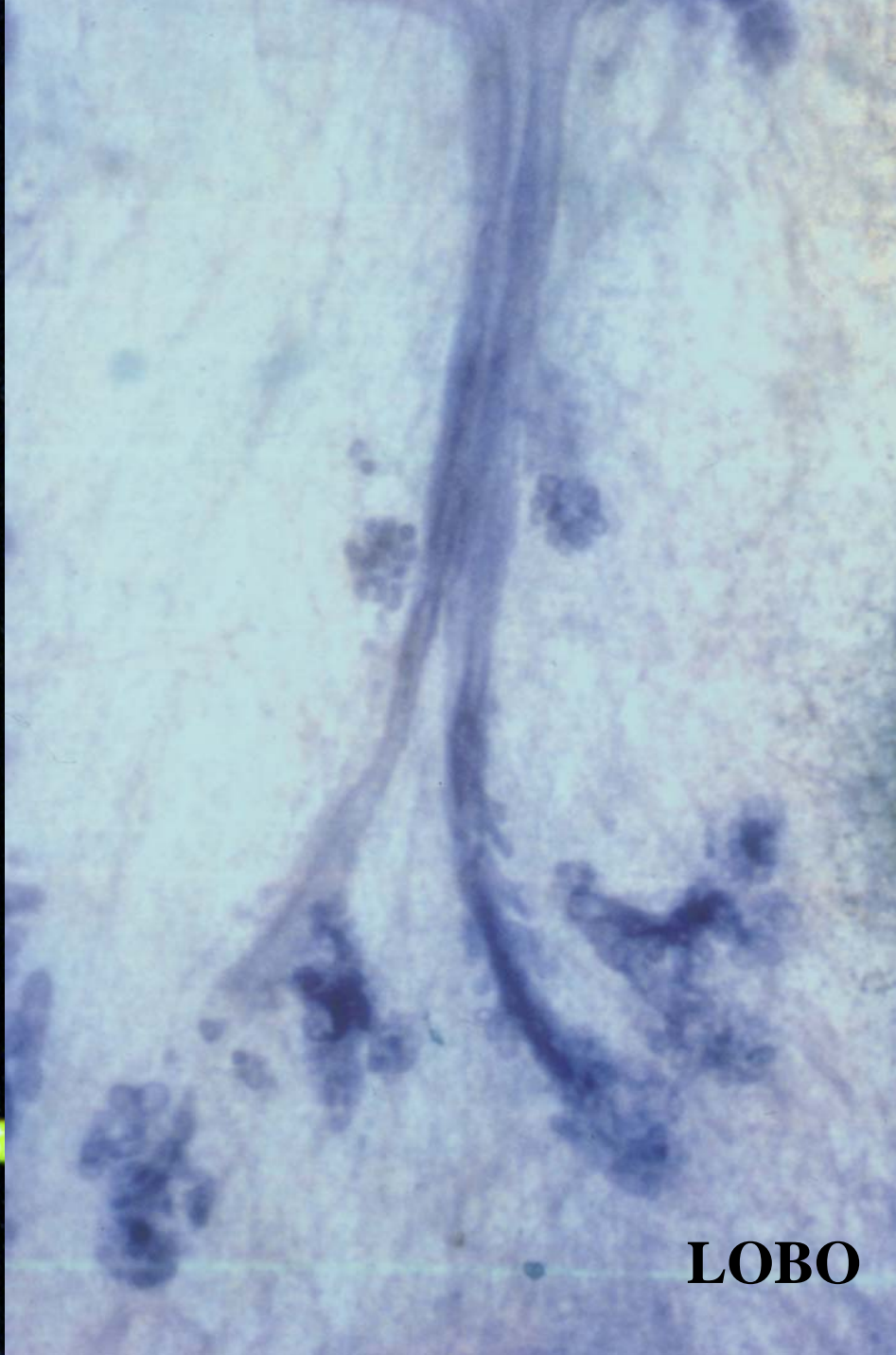
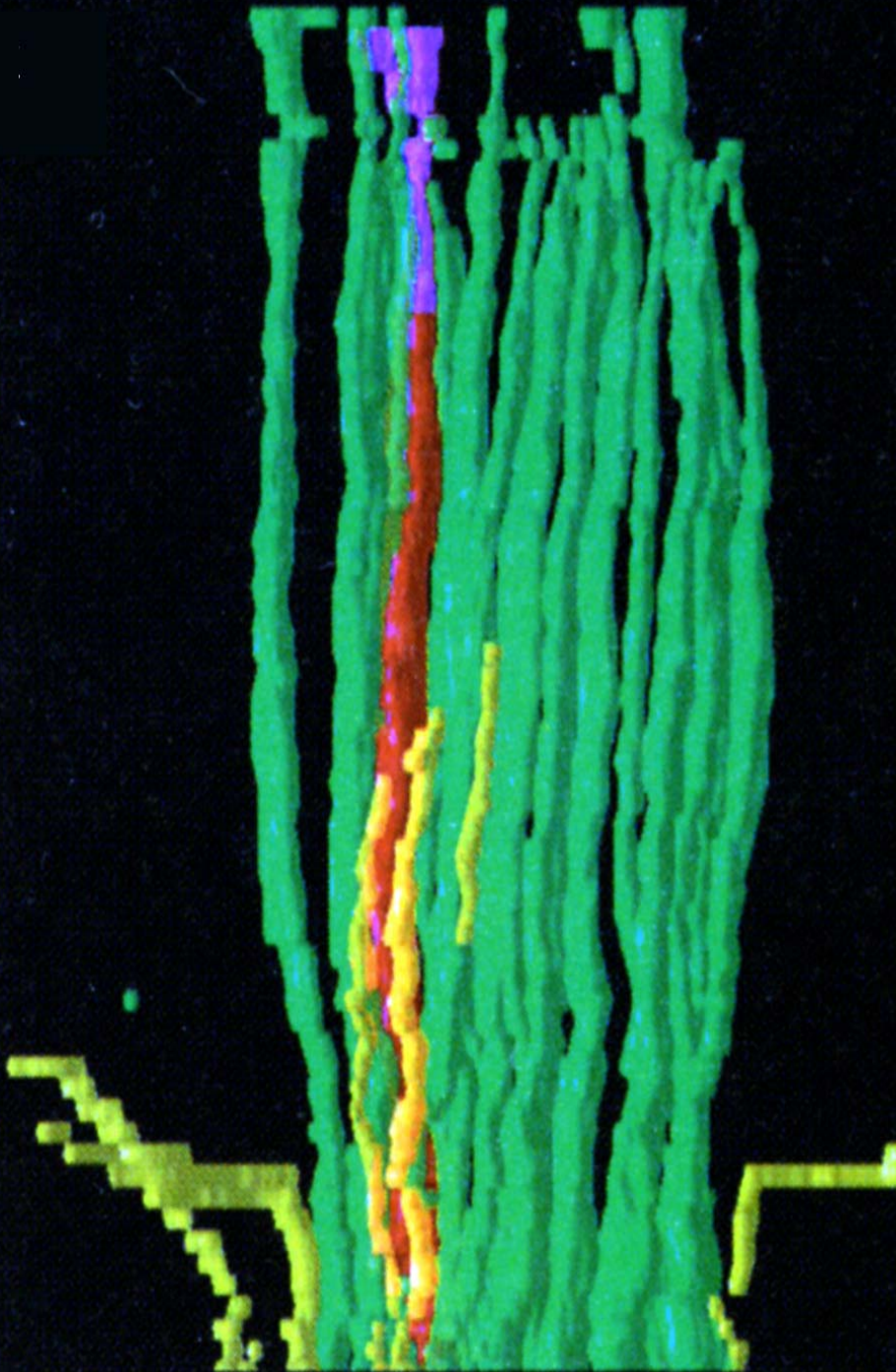
MAI et Al. (2000)

THE LOBAR CONCEPT
i.e. DCIS ARISES AND
INVOLVES ONE LOBE



**GOING JJ & MOFFAT DF
J Pathol 203; 538-544,2004.**

27 LOBES (MEAN)



LOBO





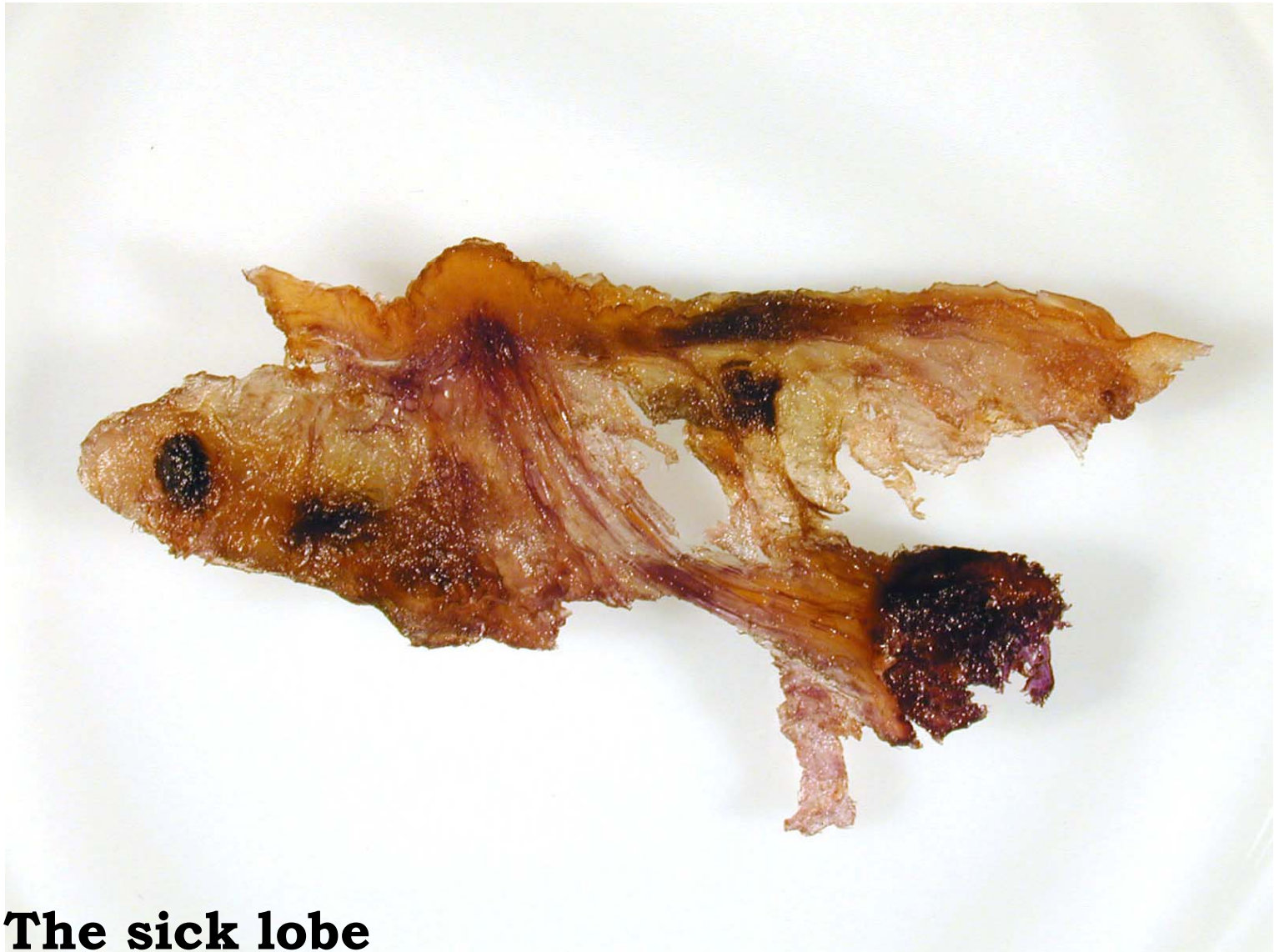
2005.09.07

GOING JJ & MOFFAT DF

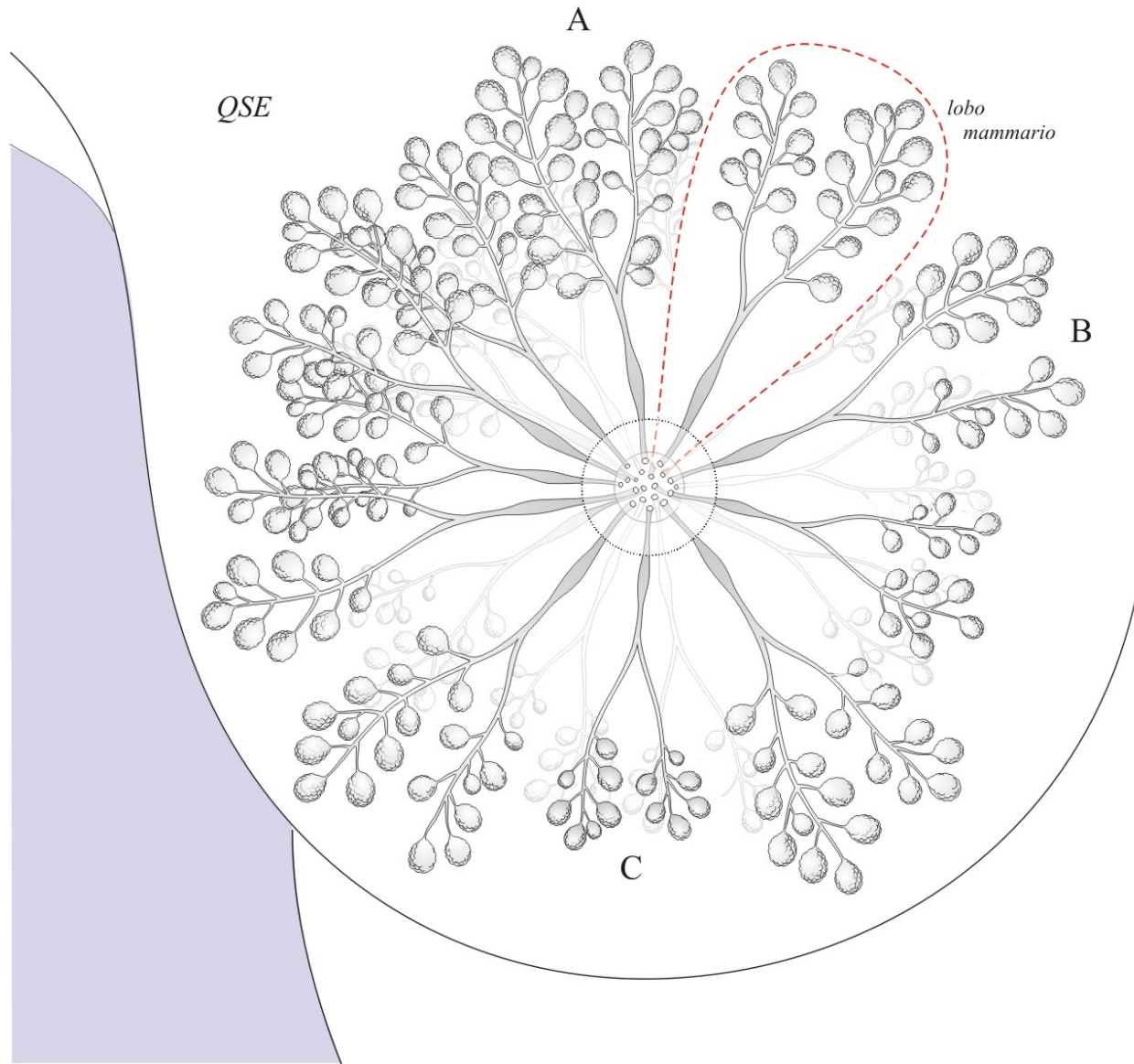
J Pathol 203; 538-544,2004.

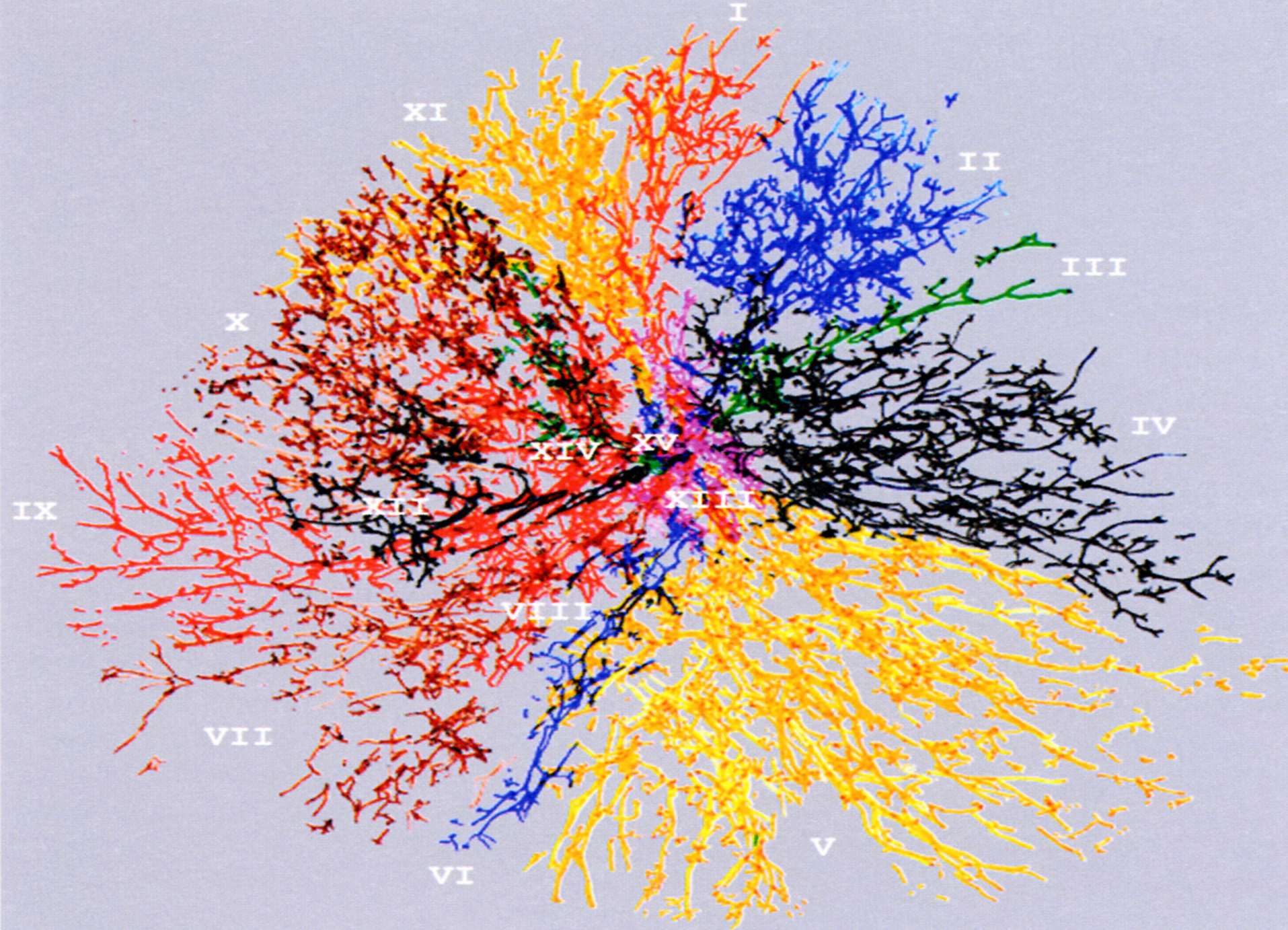
- **IL DOTTO PIU' GRANDE DRENA IL 23% DEL VOLUME DELLA MAMMELLA.**
- **3 DOTTI DRENANO IL 50%.**
- **6 DOTTI il 75%**
- **8 PICCOLI DOTTI 1.6%**

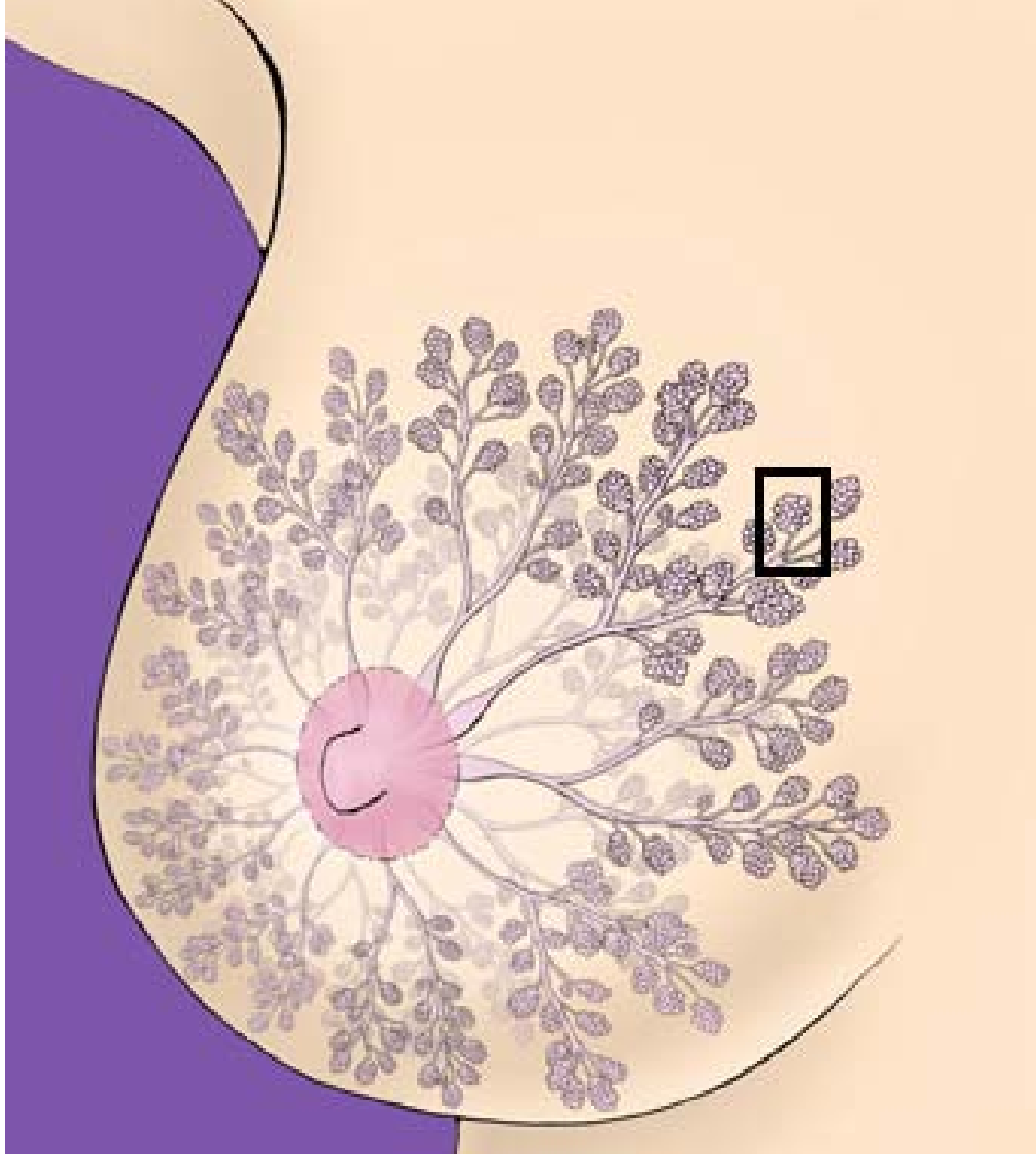


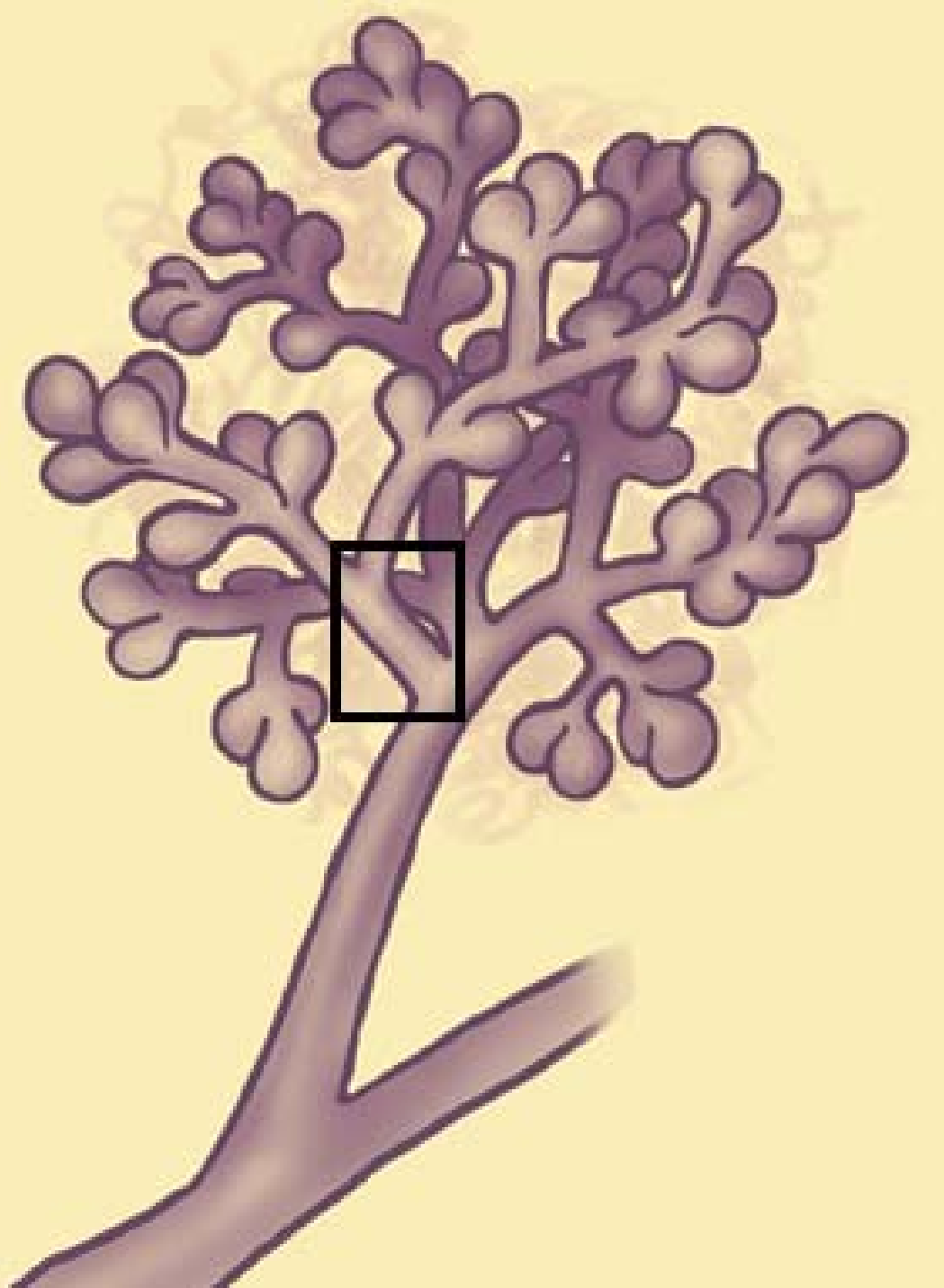


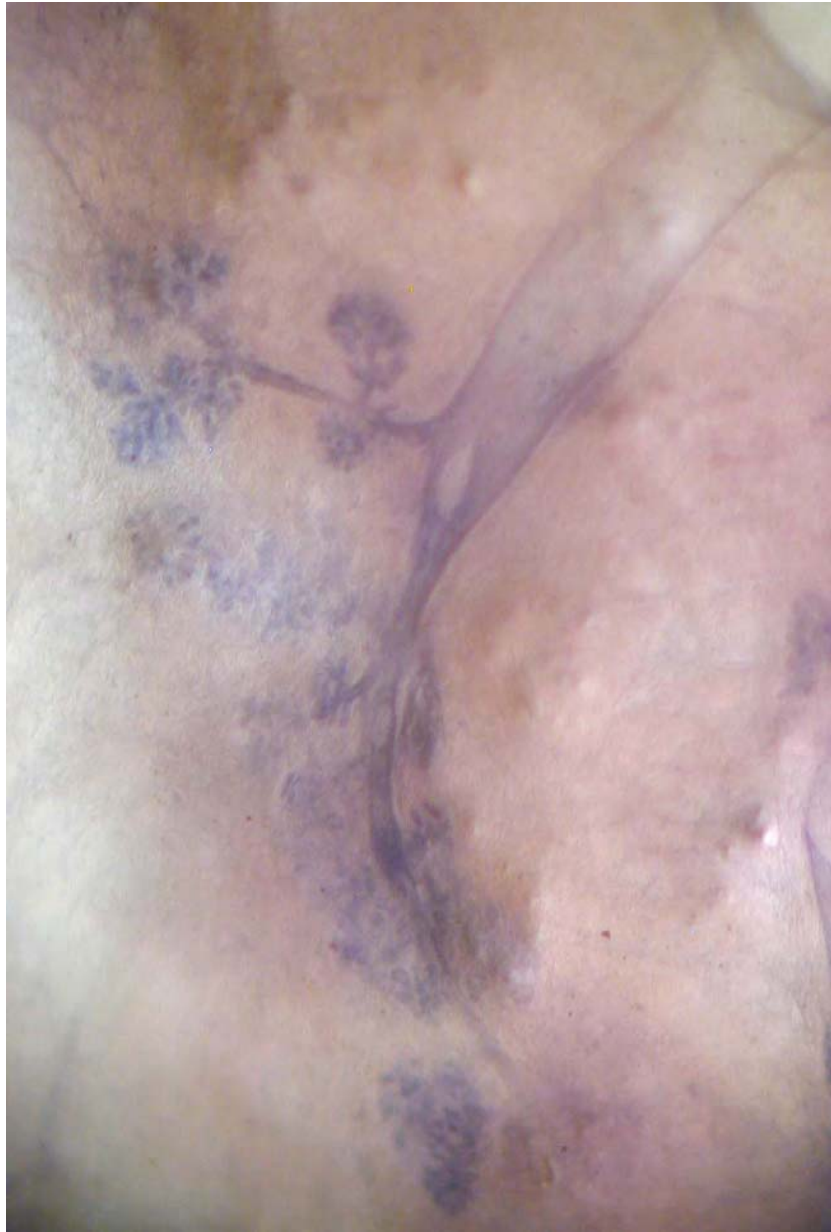
The sick lobe









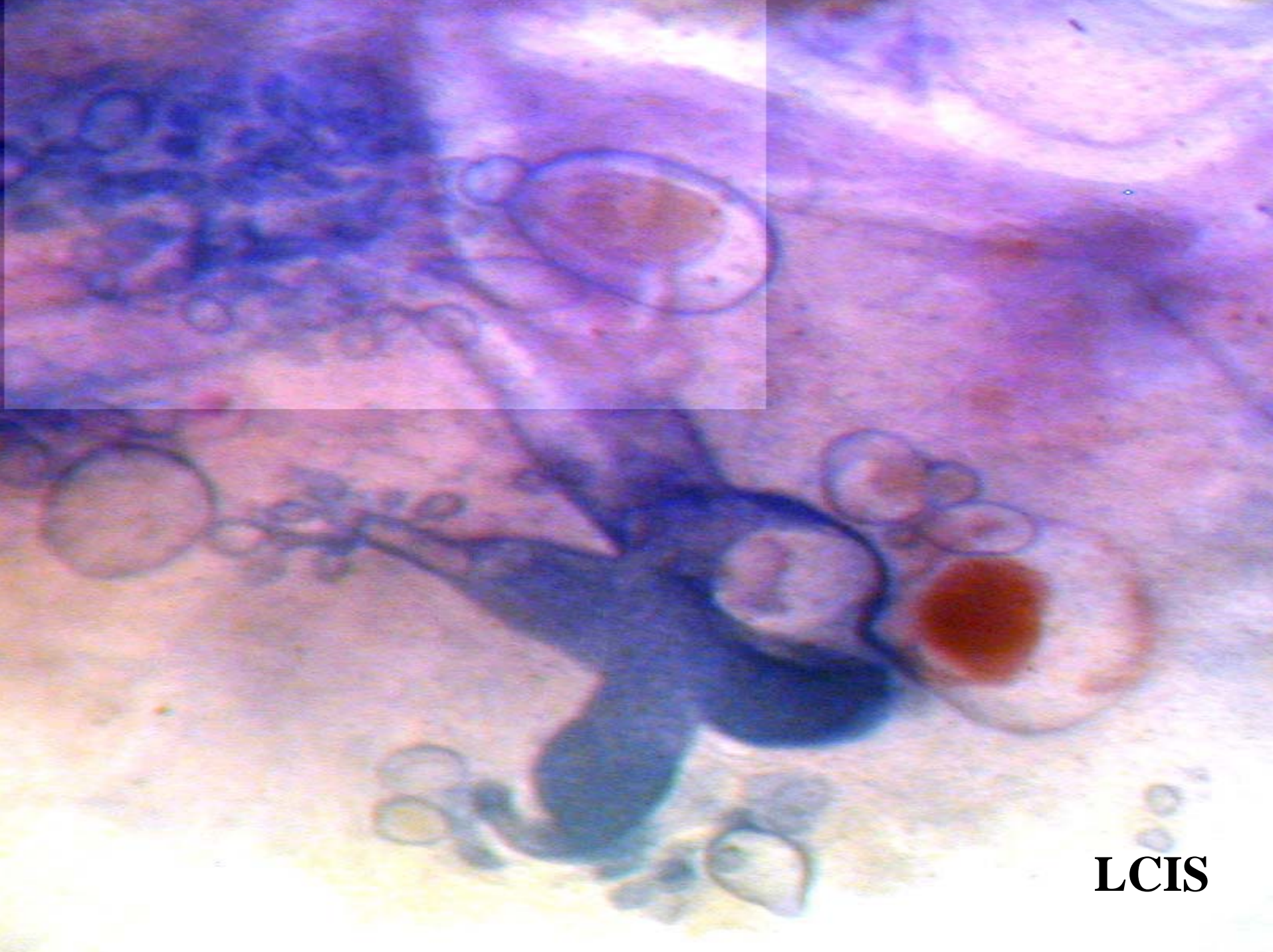


WELLINGS SR&JENSEN HM

ON THE ORIGIN AND PROGRESSION
OF DUCTAL CARCINOMA IN THE
HUMAN BREAST.

J.Nat.Cancer Inst. 50:1111-8;1973

TDLU CONCEPT



LCIS

CIS

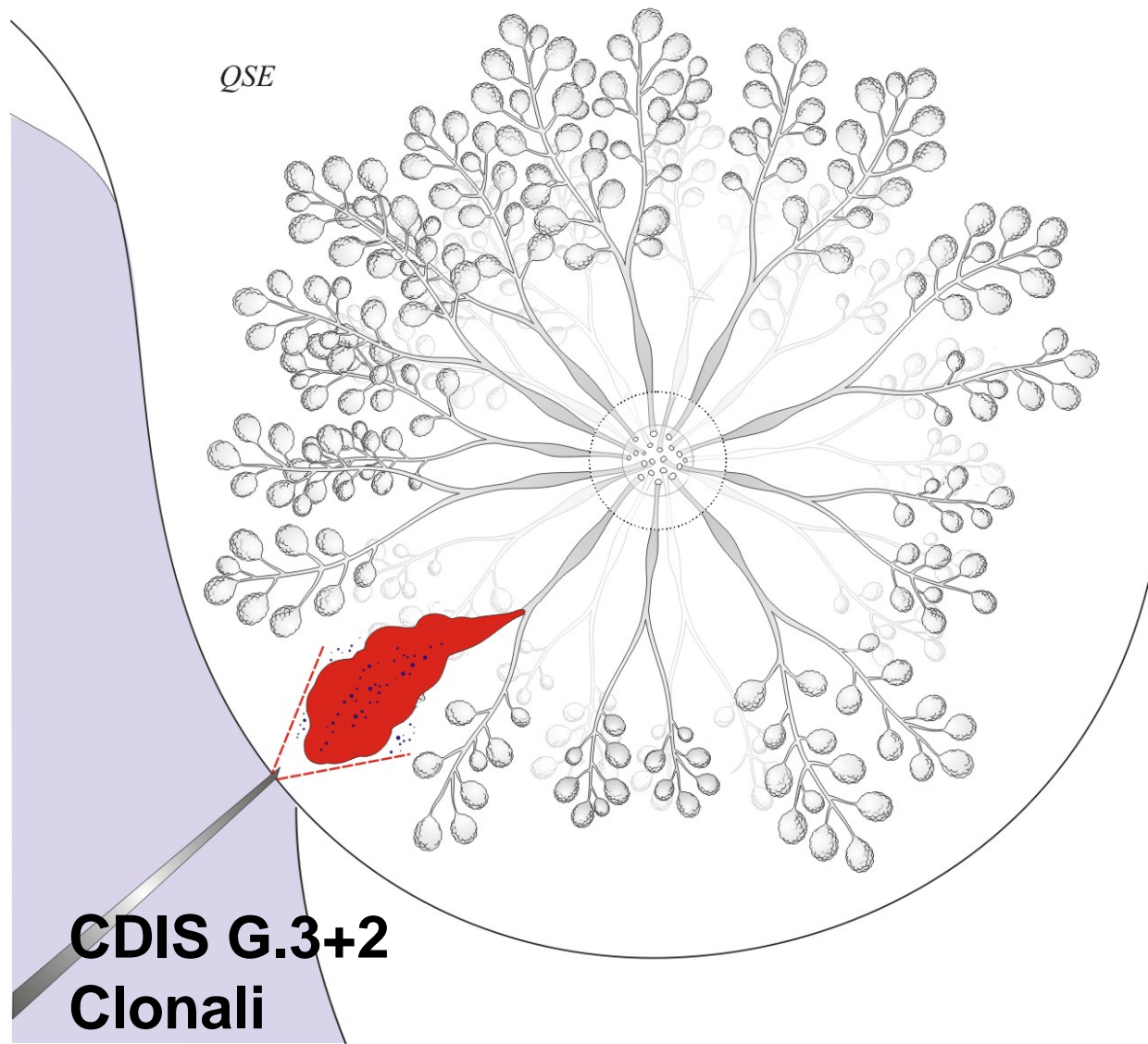
- **Carcinoma Duttale in situ (CDIS/ DIN)**
- **Carcinoma Lobulare in Situ (LCIS/LN/LIN)**
- **Carcinoma in situ ibrido**

DISTRIBUZIONE CIS

Unifocale

Multifocale

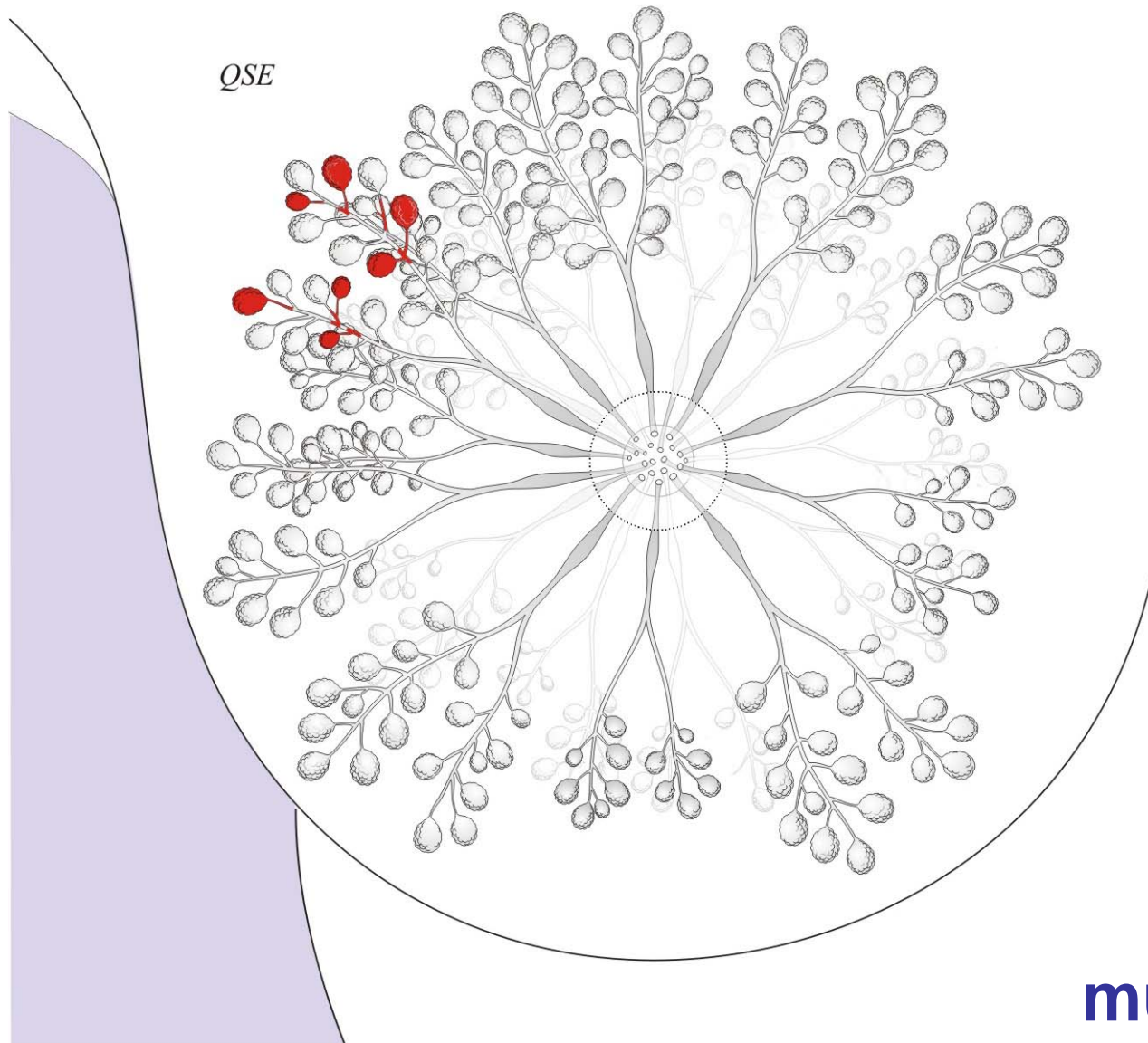
Multicentrico



QSE

**CDIS G.3+2
Clonali**

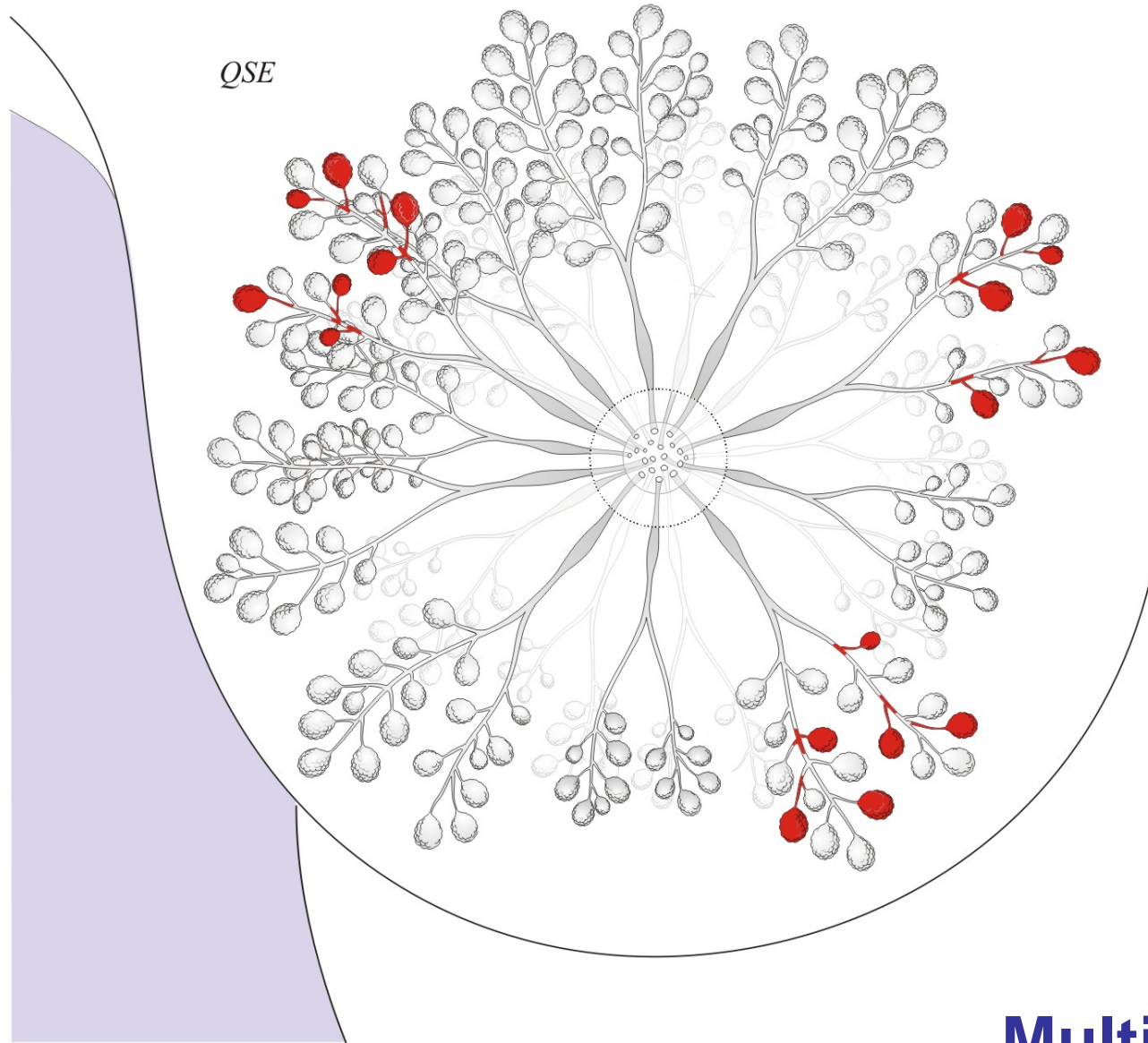
Unifocale



QSE

multifocale

CDIS ben differenziato Clonale



**Neoplasia Lobulare & DCIS g.1
Non Clonale**

**Multicentrico
(multifocale)**

Heterogeneous Versus Homogeneous Genetic Nature of Multiple Foci of In Situ Carcinoma of the Breast

MARCO VOLANTE, MD, ANNA SAPINO, MD, SABRINA CROCE, MD,
AND GIANNI BUSSOLATI, MD, FRCPath

5 casi DCIS G.3 monoclonali
2 casi DCIS G.1 cloni diversi
6 casi LN cloni diversi

DCIS/DIN