

2012 Volume 19 Suppl 1

Journal of Medical Screening

Guest Editors: Allan Hackshaw and Stephen Duffy

Review co-ordinators: E Paci, M Broeders, S Hofvind and SW Duffy

Editorial

- 1 The benefits and harms of mammographic screening for breast cancer: building the evidence base using service screening programmes *Allan Hackshaw*

Commentary

- 3 Introduction *Marco Zappa and Antonio Federici*

Original Articles

- 5 Summary of the evidence of breast cancer service screening outcomes in Europe and first estimate of the benefit and harm balance sheet *EUROSCREEN Working Group*
- 14 The impact of mammographic screening on breast cancer mortality in Europe: a review of observational studies *Mireille Broeders, Sue Moss, Lennarth Nyström, Sisse Njor, Håkan Jonsson, Ellen Paap, Nathalie Massat, Stephen Duffy, Elsebeth Lynge and Eugenio Paci, for the EUROSCREEN Working Group*
- 26 The impact of mammographic screening on breast cancer mortality in Europe: a review of trend studies *S M Moss, L Nyström, H Jonsson, E Paci, E Lynge, S Njor and M Broeders, for the Euroscreen Working Group*
- 33 Breast cancer mortality in mammographic screening in Europe: a review of incidence-based mortality studies *Sisse Njor, Lennarth Nyström, Sue Moss, Eugenio Paci, Mireille Broeders, Nereo Segnan, Elsebeth Lynge and The Euroscreen Working Group*
- 42 Overdiagnosis in mammographic screening for breast cancer in Europe: a literature review *Donella Puliti, Stephen W Duffy, Guido Miccinesi, Harry de Koning, Elsebeth Lynge, Marco Zappa, Eugenio Paci and the EUROSCREEN Working Group*
- 57 False-positive results in mammographic screening for breast cancer in Europe: a literature review and survey of service screening programmes *Solveig Hofvind, Antonio Ponti, Julietta Patnick, Nieves Ascunce, Sisse Njor, Mireille Broeders, Livia Giordano, Alfonso Frigerio and Sven Törnberg The EUNICE Project and Euroscreen Working Groups*
- 67 Communicating the balance sheet in breast cancer screening *Livia Giordano, Carla Cogo, Julietta Patnick, Eugenio Paci and the Euroscreen Working Group*
- 72 Mammographic screening programmes in Europe: organization, coverage and participation *Livia Giordano, Laurence von Karsa, Mariano Tomatis, Ondrej Majek, Chris de Wolf, Lesz Lancucki, Solveig Hofvind, Lennarth Nyström, Nereo Segnan, Antonio Ponti and The Eunice Working Group*

Royal Society of Medicine Press Limited, 1 Wimpole Street, London W1G 0AE, UK

2012 Volume 19 Suppl 1

Journal of Medical Screening

2012 Vol 19 Suppl 1 Pages 1-82

JOURNAL OF MEDICAL SCREENING

RSM Press

Royal Society of Medicine Press

RSM Journals



A wealth of content at your fingertips...

...Sign up now for your Free Trial



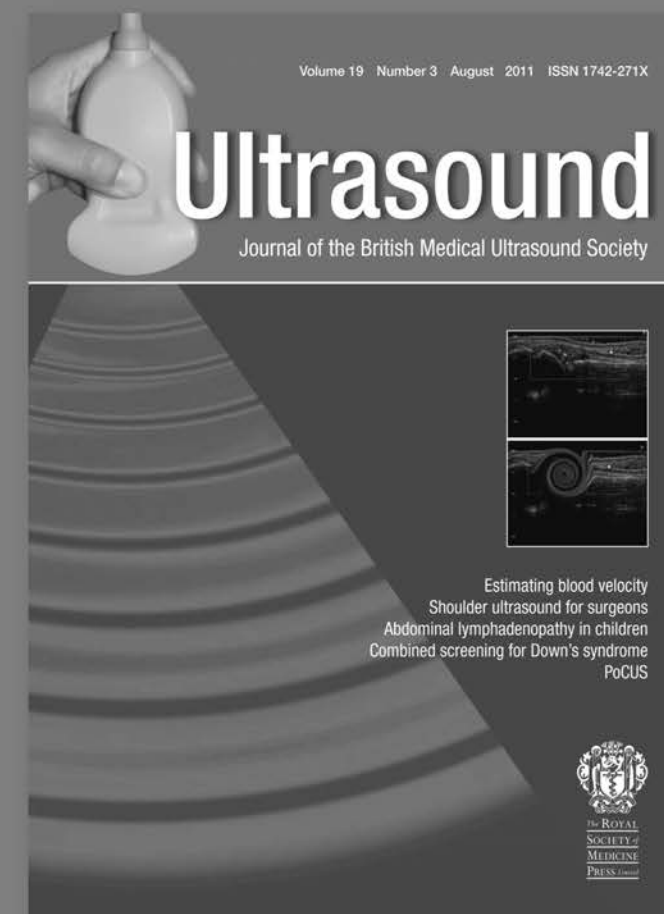
30 Day Free Trials for both institutional
and personal subscribers.

To sign up to an institutional free trial, go to
<http://www.rsmpress.com/librarians>
and set up your subscription in 3 easy steps.

To sign up to a personal free trial, go to
<http://www.rsmpress.com/librarians/ftinst.php>
and select the journal of your choice.

www.rsmpress.com

RSM Journals



AN ESSENTIAL SUBSCRIPTION IN 2012

Ultrasound

Journal of the
British Medical
Ultrasound Society

Editor: Hazel Edwards, East & North
Herts NHS Trust, UK

Ultrasound aims to cover all aspects of medical ultrasound from the theoretical through to clinical applications and their impact on both clinicians and patients. This quarterly journal fulfils both an educational and a scientific research role by publishing review articles, current research, and descriptions of new techniques and equipment. *Ultrasound* is international in scope with editorial board members from all over the world. Contributions are welcomed from all sections of this important diagnostic field, with full details about submission of articles available on the website.

2012, Volume 20, 4 issues (quarterly) • Print ISSN 1742-271X • Online ISSN 1743-1344
Standard subscription 2012: £211.00 / €241.00 / US\$369.00
Online only 2012 (prices exclude VAT): £190.00 / €217.00 / US\$332.00

www.rsmpress.com



Journal of Medical Screening

Journal of the Medical Screening Society



The ROYAL
SOCIETY of
MEDICINE
PRESS Limited

Editor

Nicholas Wald (UK)

Associate Editors

Principles of screening: James E Haddow (US)

Antenatal screening: Eric Jauniaux (UK)

Neonatal screening: Bridget Wilcken
(Australia)

Childhood screening: Carol Dezateux (UK)

Cancer screening: Jack Mandel (Canada)

Cardiovascular screening: Malcolm Law (UK)

Editorial Assistant

Jan Mackie (UK)

Statistical Advisor

Joan Morris (UK)

Editorial Committee

Harland Austin (USA)

Alan T Bombard (USA)

Peter Boyle (Italy)

Jacob A Canick (USA)

Mike Catchpole (UK)

Graham Colditz (USA)

Howard S Cuckle (UK)

George Cunningham (USA)

Jack Cuzick (UK)

Nick E Day (UK)

Stephen Duffy (UK)

J Mark Elwood (Canada)

Gary D Friedman (USA)

Allan K Hackshaw (UK)

Matti Hakama (Finland)

Clark W Heath Jr (USA)

Janet Husband (UK)

Les Irwig (Australia)

Barnett S Kramer (USA)

Alistair McGuire (UK)

K M Mohandas (India)

Joan Morris (UK)

Sue Moss (UK)

J A Muir Gray (UK)

Bent Norgaard-Pedersen (Denmark)

John Northover (UK)

Glenn E Palomaki (USA)

Julietta Patnick (UK)

Peter Sasieni (UK)

R A P Scott (UK)

Alfred Sommer (USA)

Bradford L Therrell (USA)

Paul J van der Maas (The Netherlands)

Aims and scope

The *Journal of Medical Screening* covers all aspects of medical screening. The journal aims to focus a multi-disciplinary and currently fragmented subject and to provide guidance for the effective evaluation and implementation of screening methods. All manuscripts submitted for publication should be prepared in accordance with the Guidelines for Authors published in each issue and also available online at www.jms.rsmjournals.com/site/misc/authors.xhtml

Editorial Office

Journal of Medical Screening

Wolfson Institute of Preventive

Medicine, St Bartholomew's and the Royal

London School of Medicine and Dentistry,

Charterhouse Square,

London EC1M 6BQ, UK

Tel: +44 (0)20 7882 6271

Fax: +44 (0)20 7882 6270

Email: j.a.mackie@qmul.ac.uk

Journal of Medical Screening (ISSN 0969-1413, online ISSN 1475-5793) is published and distributed quarterly in both print and electronic form on behalf of the Medical Screening Society by Royal Society of Medicine Press Limited, 1 Wimpole Street, London W1G 0AE, UK. www.rsmjournals.com

© 2012 Journal of Medical Screening

All rights reserved. No part of this publication may be reproduced, stored in a retrieval system, or transmitted in any form or by any means, electronic, mechanical, photocopying, recording, or otherwise without the prior permission of the *Journal of Medical Screening*.

Contributors and advertisers are responsible for the scientific content and the views expressed, which are not necessarily those of the Editor, the Medical Screening Society or of Royal Society of Medicine Press Limited.

Periodicals postage paid, Rahway, NJ. US

Postmaster: send address changes to: *Journal of Medical Screening*, c/o Mercury Airfreight International Ltd, 365 Blair Road, Avenel, NJ 07001, USA.

Subscription information

Volume 19, 2012 (four issues)

All orders and enquiries should be sent to Portland Customer Services, Commerce Way, Colchester CO2 8HP, UK.

Tel: +44 (0)1206 796351

Fax: +44 (0)1206 799331

Email: sales@portland-services.com

The annual subscription fee for *Journal of Medical Screening* entitles subscribers to access all of the archival online content; further details can be found at jms.rsmjournals.com.

Reprints and Supplements

Business Development, Royal Society of Medicine Press Limited, 1 Wimpole Street, London W1G 0AE, UK.

Tel: +44 (0)20 7290 2900.

Email: wdolben@contentednet.com

Web: www.rsmjournals.com

For any online enquiries, please email rsmjournals@rsm.ac.uk

Advertising sales

Jon Ryan,

SMS, 1 Friary, Temple Quay, Bristol BS1 6EA, UK.

Tel: +44 (0)117 923 2951.

Fax: +44 (0)117 344 5300.

Email: jon.ryan@socmedia.co.uk

Web: www.socmedia.co.uk

Production

Sadie Copley-May

Royal Society of Medicine Press Limited,

1 Wimpole Street,

London W1G 0AE, UK.

Tel: +44 (0)20 7290 2925

Fax: +44 (0)20 2790 2929

Email: jmsproduction@rsm.ac.uk

Typeset by Techset Composition Ltd, 5 Court Farm Yard, Lower Woodford, Salisbury SP4 6NQ, and printed in Great Britain on acid-free paper by Henry Ling Limited at the Dorset Press, Dorchester, Dorset

GUIDELINES FOR AUTHORS.....

Editorial policy

All material submitted for publication is assumed to be submitted exclusively to the journal unless the contrary is stated. All authors must give signed consent to publication.

If requested, authors shall produce the data upon which the manuscript is based for examination by the editor.

The editor retains the customary right to style and if necessary to shorten material accepted for publication, and to alter the manuscript to achieve consistency of terminology.

Preparing your manuscript

- *J Med Screen* publishes full length articles, short reports, letters to the Editor, guest editorials, invited reviews and opinions.
- All submissions must be in English.
- Our preferred format is Microsoft Word.
- Please do not use linked reference systems or headers and footers.
- Please submit your contribution as a single document, with a separate cover letter.
- For information on preferred terminology and statistical information, see separate guidelines at <http://jms.rsmjournals.com/cgi/content/full/15/1/51>
- Up to six authors may be listed and additional investigators may be detailed separately at the end of the paper, or the senior author may give a group title for papers with genuinely large authorship.
- Manuscripts should be submitted double spaced, with unjustified text throughout, using margins of not less than 2.5 cm.
- Pages should be numbered.
- The email address of the corresponding author will be assumed to be the correct address for all correspondence relating to the manuscript.
- Avoid abbreviations except where necessary or commonly used. All abbreviations must be defined.
- SI units, except for blood pressure, preferred. Where appropriate, use confidence intervals rather than *P* values.
- All previously published material must be accompanied by the written consent to reproduction of the copyright holder and the corresponding author. An acknowledgement of the permission should be included at the relevant point in the paper, and a full reference to the original publication should be listed in the references.
- Keep a copy of your submitted manuscript for reference.
- An acknowledgement of receipt of the manuscript will be sent, with a manuscript reference number.

Full length original articles

The study should be presented in sections:

1 **Title sheet:** Stating the title of the paper, the authors, their job titles, their department(s) and institution(s), and the name and address (including email address, telephone and fax numbers) of the corresponding author. The title should be concise and informative, accurately indicating the content of the article.

2 **Structured abstract:** No more than 250 words, summarizing the problem being considered in the study, where the study was carried out, how the study was performed, the salient results, and the principal conclusions of the study, each entered under subheadings of 'Objectives', 'Setting', 'Methods', 'Results', and 'Conclusions'. It may not always be necessary for every heading to be used.

3 **Introduction:** Brief description of the background that led to the study (current results and conclusions should not be included).

4 **Patients/methods:** Details relevant to the conduction of the study. Statistical methods should be clearly explained at the end of this section. If preparing statistical data for publication, please read the statistical guidelines at <http://jms.rsmjournals.com/cgi/content/full/15/1/51>

5 **Results:** Work should be reported in SI units. Undue repetition in text and tables should be avoided. Comment on validity and significance of results is appropriate, but broader discussion of their implications is restricted to the next section. Subheadings that aid clarity of presentation within this and the previous section are encouraged.

6 **Discussion:** The nature and findings of the study are placed in context of other relevant published data. Avoid undue extrapolation from the study topic. Acknowledgements, including financial support and industry affiliations, are given at the end of this section.

7 **References:** In accordance with the Vancouver agreement, these are cited by the numerical system and listed in order cited in the text, not in alphabetical order by authors' names. (In the text the reference number should be given in superscript and outside the punctuation.) Information from manuscripts not yet in press, papers reported at meetings, or personal communications should be cited in the text as 'unpublished data', not as formal references. Up to six authors should be listed; if there are more than six then the first three should be given followed by *et al*. Journal titles are abbreviated in accordance with the style of *Index Medicus*. For example:

- 1 Banks E, Reeves G, Beral V, *et al*. Predictors of outcome of mammography in the National Health Service Breast Screening Programme. *J Med Screen* 2002;9:74-82
- 2 Brock DJH. Cystic fibrosis. In: Wald N, Leck I, eds. *Antenatal and neonatal screening*. 2nd ed. Oxford and New York: Oxford University Press, 2000: 325-49

Responsibility for the accuracy and completeness of the references lies with the author.

8 **Tables:** Each table should be on a separate sheet, have a heading, and contain no vertical rules. Tables should not duplicate information given in the text.

9 **Figures:** Figures should be used when data cannot be expressed clearly in any other form. In general, tables should be

used in preference to figures. Figures should not duplicate information given in the text. Legends to figures should be listed on a separate sheet. For photomicrographs include the stain used; magnification should be indicated by bar marker on the figure. All images must be supplied at high resolution, preferably 600 dpi. Figures supplied in colour will be printed in black & white unless the additional costs involved in colour printing are met by the author.

Short reports

Short reports should in general not exceed 1000 words, with one figure or one table and no more than 10 references. The format should follow that requested for full length original articles, but a brief unstructured abstract should be provided.

Letters

Comments arising from recent articles published in the journal are welcomed. Original observations relating to short clinical or laboratory studies or single case reports may also be appropriately presented as a letter. Letters are not divided into sections and are limited to no more than 600 words and 10 references; one table or one figure may be included. Instructions for references, tables, and figures are the same as for full length articles.

Other articles

The journal also publishes guest editorials, invited reviews, opinion, and statistical issues. Authors wishing to contribute to the opinion or statistical sections should first consult the editor.

Submitting your manuscript

Manuscripts must be submitted via the online manuscript submission and peer review site at <http://mc.manuscriptcentral.com/rsm-jms>. They should be prepared in accordance with the full Guidelines for Authors at <http://jms.rsmjournals.com/site/misc/authors.xhtml>

Each author must sign the covering letter as evidence of consent to publication and all authors will be required to sign a Licence for Publication form for their articles before publication.

Authors submitting papers are asked to give the names and addresses of two people who might act as referees for their paper.

Papers may be subjected to outside peer review, which takes an average of eight weeks. Please note that delays occur most often over the Christmas and summer periods.

Proofs will be sent by email to the designated corresponding author as a PDF file attachment, and should be corrected and returned promptly. Alterations to the original text should be kept to a minimum and may be charged to the author.

A PDF e-print of each published article will be supplied free of charge to the author for correspondence; hard copy offprints may be ordered from the publisher when the proofs are returned.